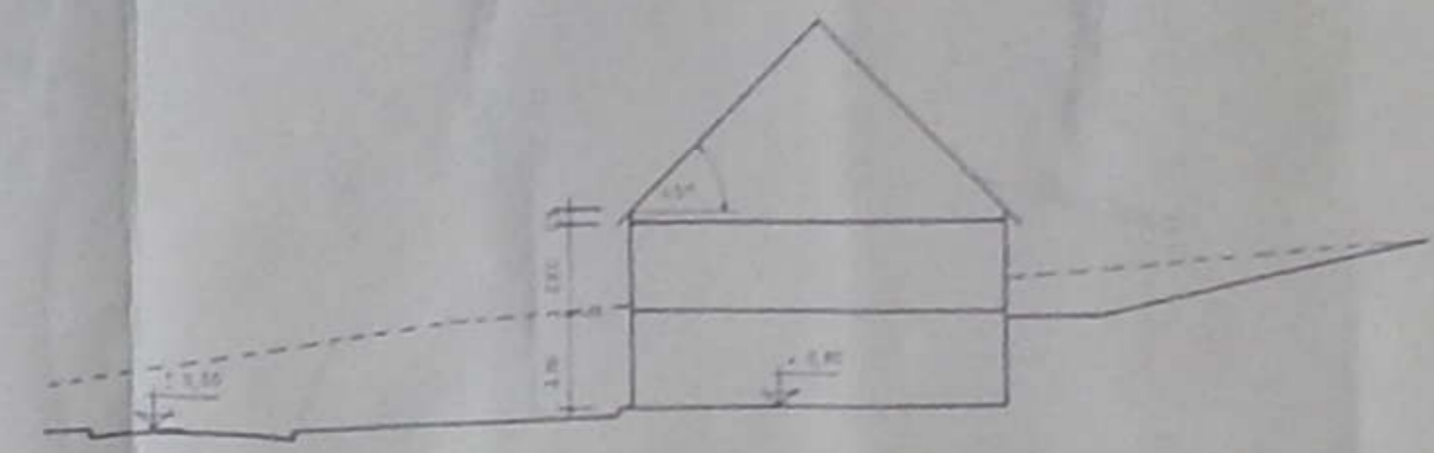


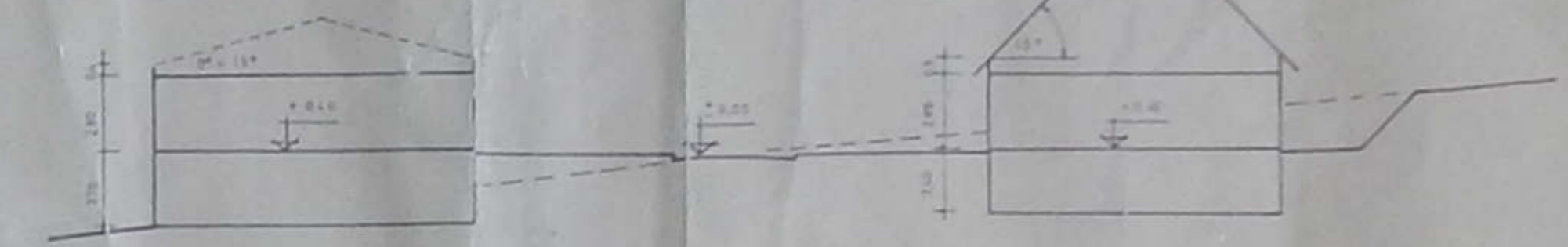
Änderung des Bebauungsplanes  
 Am Steinberg  
 vom 15.2.1966 gem. § 13 B Bau G



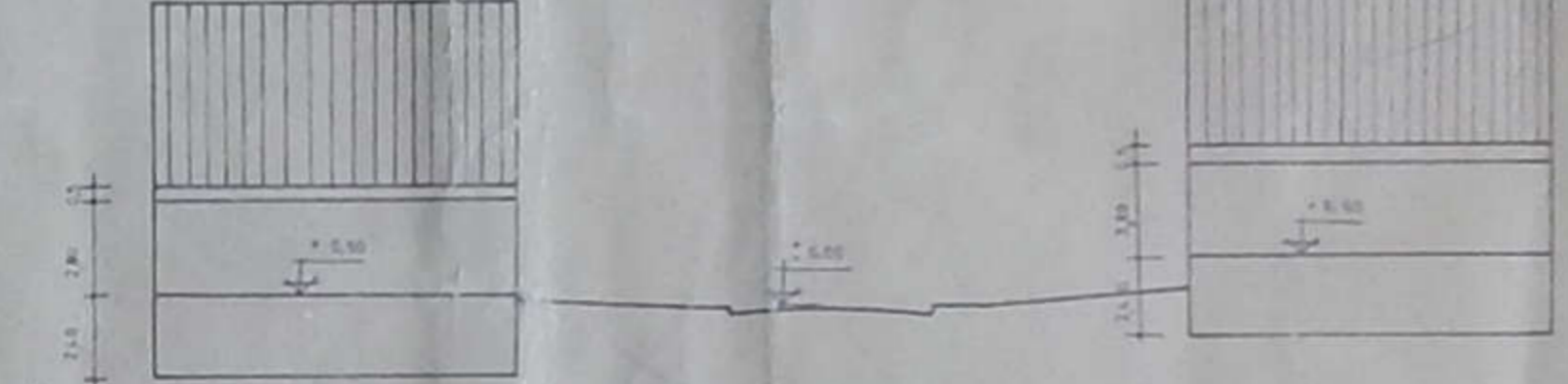
Schnitt a - a M 1:200



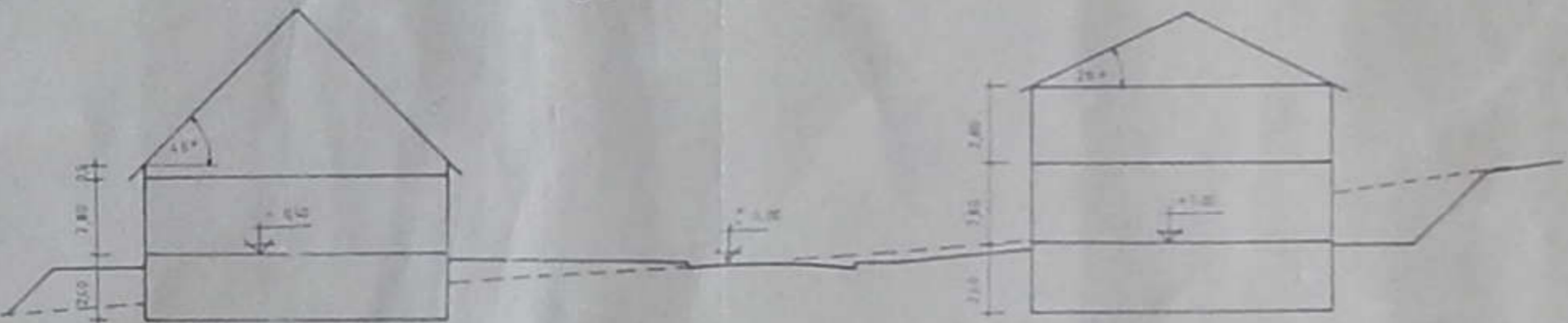
Schnitt b-b



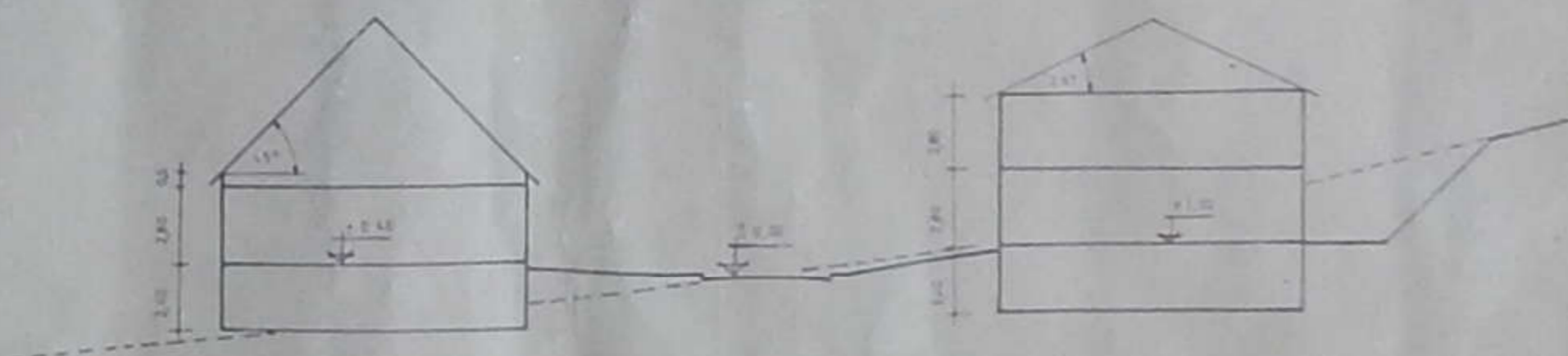
Schnitt c-c



Schnitt d-d



Schnitt e - e



Handwritten notes and signatures on the right side of the page, including names like 'Herrn B. K...' and 'Herrn H. ...'. There are also official stamps and seals, including one from the 'AMTSBAUAMT NALBACH'.

AMTSBAUAMT NALBACH  
 Bebauungsplan  
 AM STEINBERG